

Tieback Hat Pattern

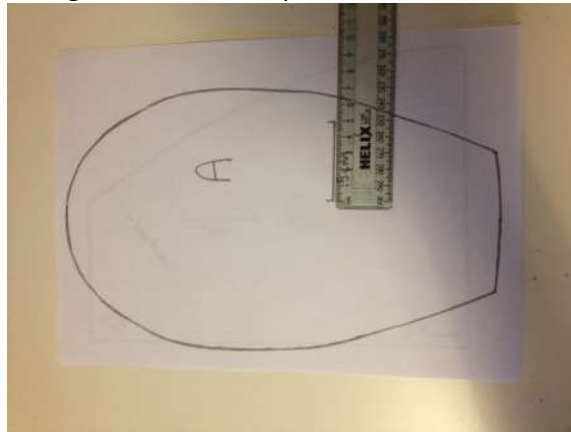
You will need:

- 0.25m lining fabric (green)
- 0.25m exterior fabric (frogs)
- Coordinating thread
- Scissors – paper, embroidery and fabric
- Sellotape
- Chopstick/implement for pushing out corners
- Fabric marker
- Pins
- Ruler / Tape measure
- Paper pieces (print at 100%)

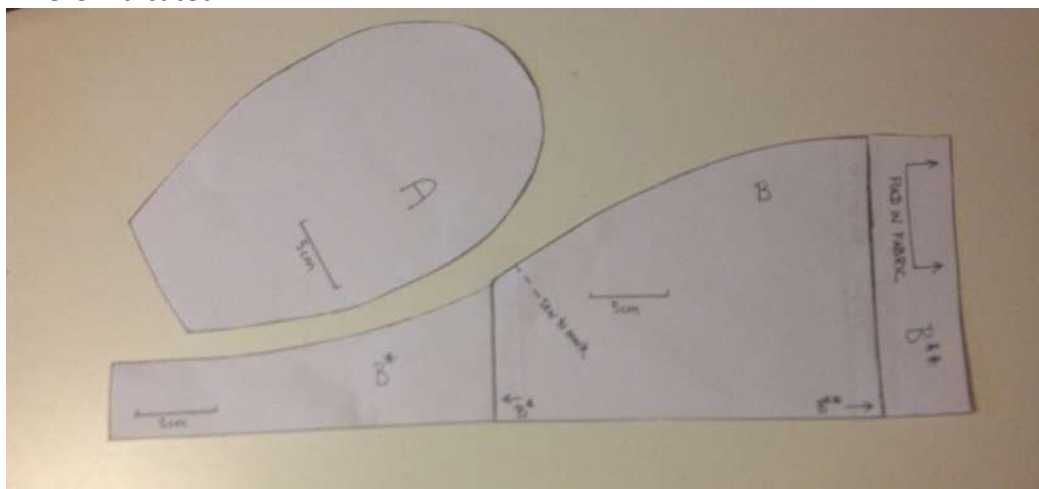


Method

1. Check paper pieces have printed to the correct scale by checking the 5cm mark on each sheet against a ruler/ tape measure



2. Assemble paper pieces by cutting out and sticking B/ B* and B** together where indicated

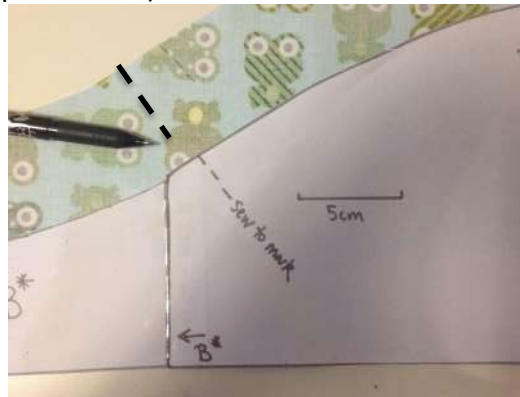


3. Press fabric

4. Fold each piece of fabric in half. Carefully pin Piece B to each fabric in turn and cut around. Take care on the exterior fabric that you can still fit in pattern piece A.



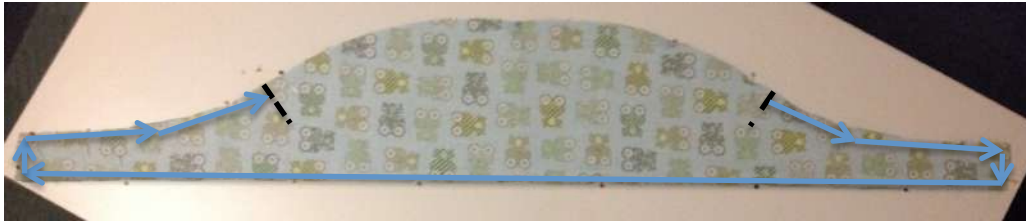
5. Take care to transfer the stitch line mark from the pattern onto the reverse side of pattern piece B. You only need to do this once (so pick the fabric the marks will show up better on).



6. You should now have Piece A & B in exterior fabric (frogs on my hat) and piece B in contrasting fabric (green)



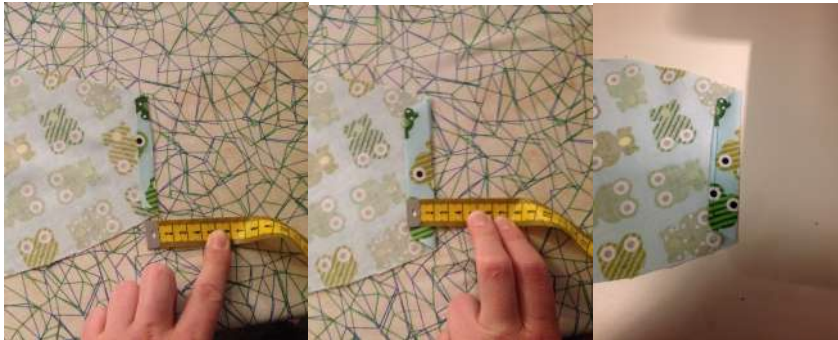
7. Place the two B pieces together rightside together. Pin around the edge – the side with the markings should be uppermost. Stitch around the two pieces from sewing mark to sewing mark using a $\frac{3}{8}$ " seam. The top (curved) edge should be left open.



8. Clip neatly round the corners that you have just sewn to reduce bulk. Turn rightside out using the chopstick to fully push the corners out.



9. **Hem piece A** – press a double fold hem – 1cm first fold, 2cm second fold. Then stitch in place.



10. Making the hat - pin the top of the hat (A) onto the band (B). The easiest way to do this is to fold both pieces in half and line up the centre creases and then pin all around the curve. Remember to pin exterior fabric rightside together (so frogs to frogs in my example)



11. Straight stitch around this pinned edge using a 3/8" seam allowance taking care to ensure the start and end points of your stitching line are secure as the nature of the design means they are stress points.
Zig Zag around the edge for neatness.



12. Wear or Gift your hat with pride.